

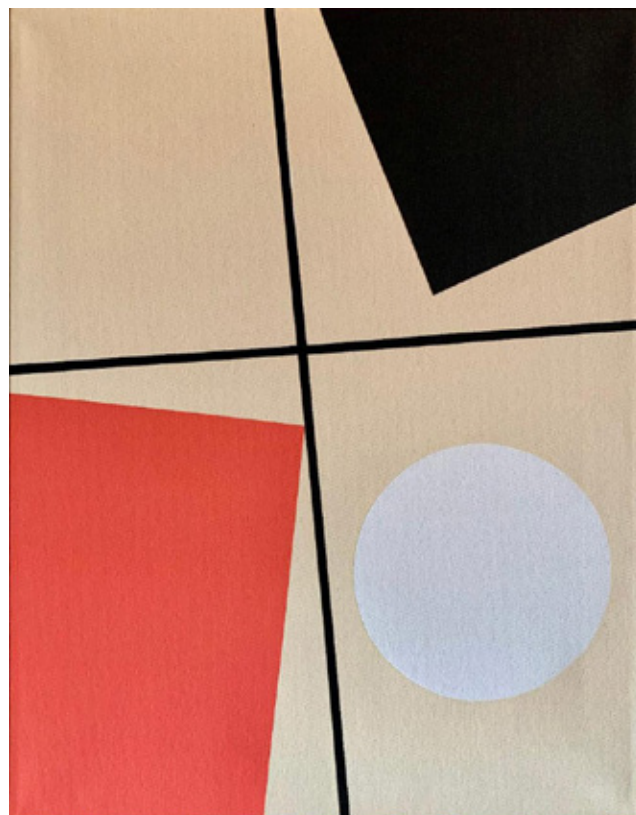
ART TO LIVE WITH



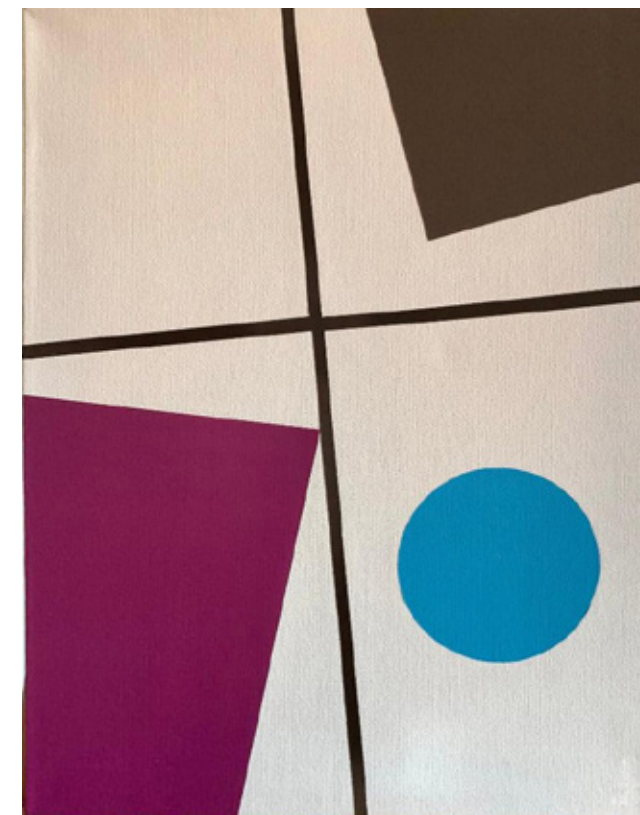
ARTISTS

LARRY BENTLEY	3
SHAWN COX	6
CHARLES ELLIS	9
HOLLI FRILEY	15
GARRET HARDEE O'NEAL	18
TYLER ROBERTSON	23
MARY GRACE TATE	28
ROSS THOMAS	32

Founded by Cassie and Charlie Rowland, Eastin Creative is a digital-based gallery featuring a range of art, in an array of mediums and price points. We are committed to showcasing the impressive talent of our partner artists through online content, in-person showings, and exhibitions. Eastin Creative is thrilled to work with new and experienced collectors to bring affordable, meaningful pieces into their homes.



"Black, White & Coral"
Acrylic on canvas
18 x 14
\$460



"Brown, Blue & Violet"
Acrylic on canvas
16 x 12
\$395

LARRY BENTLEY

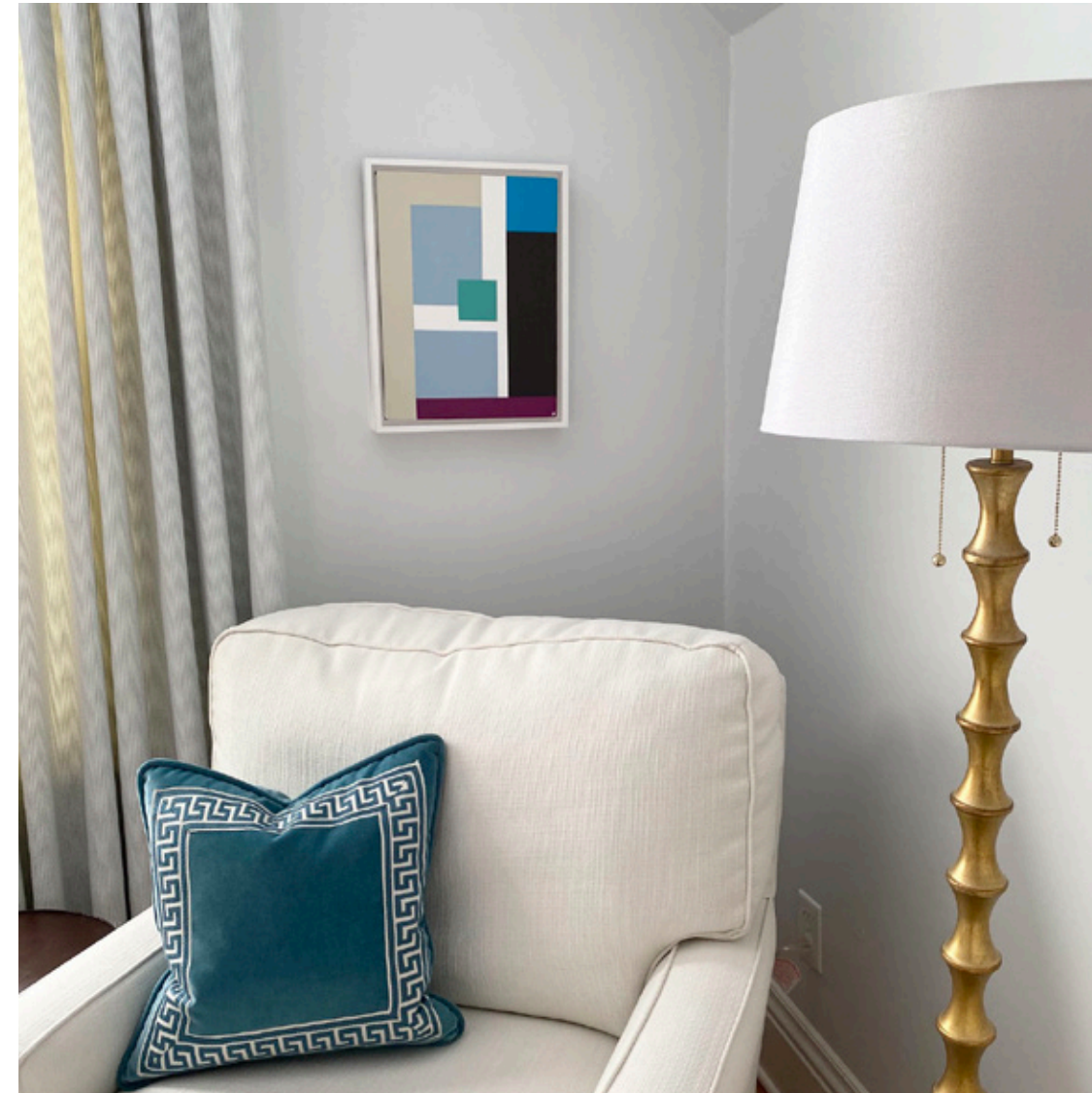
Larry Bentley is a self-taught artist based in Harlem, NYC whose work is mainly focused on hard edge painting, color field, minimal and geometric abstraction art, with an emphasis on clean lines, varying shapes and color combinations. His inspirations derive from his past profession in the fashion and modeling industry, as well as the abundance of art he has been surrounded by while working at The Metropolitan Museum of Art and Sotheby's Auction House in New York City. He is greatly influenced by the many cultures and places traveled to, architecture, interior design and the Mid-Century Modern era, especially by the prominent artists of that period and of the simplistic ethos and aesthetics exhibited during that time.

"I want viewers and collectors to have an immediate, absolute visual response to my art, engaging in the colors, shapes, form and all its medium". I love the quote of the great artist Frank Stella - "What you see is what you see".

CONTACT FOR COMMISSIONS

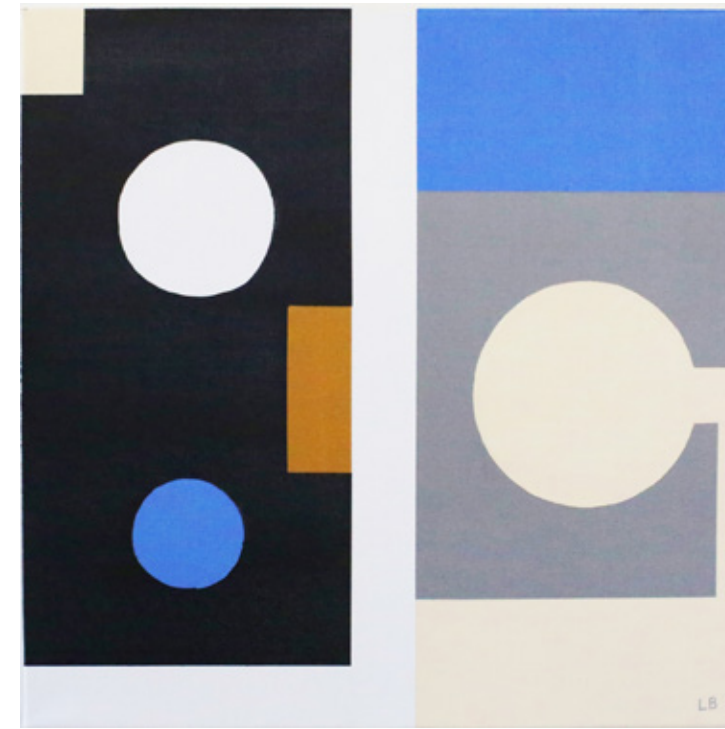


“Hepworth II (framed)”
Acrylic on canvas
18 x 13.5
\$500





"Composition (no.2) "
Acrylic on canvas
14 x 18
\$470



"Composition (no.1)"
Acrylic on canvas
12 x 12
\$325



"Gunslinger"
Dye print on fine art paper
36 x 36
\$1750

SHAWN COX

Shawn Cox is a multimedia artist, juror, collector and curator based in Austin, Texas. His vibrant and diverse work has been shown and exhibited throughout the United States. His work can be found in corporate and private homes across the United States. Cox has degrees in Architecture and Law but has maintained and developed an art practice for over 30 years. Although he grew up in a ranching family in west Texas, surrounded by the vastness and harshness of the Texas desert working and nurturing both the land and animals, he was expected to be academically and professionally successful as well. The mythology and iconography of a cowboy was a persona that did not translate directly into academia, urban living and professional working norms. His work explores this identity duality, perception and dichotomy.

CONTACT FOR COMISSIONS



“Fist Bump”
Dye print on fine art paper
36 x 36
\$1750





“Can’t Get You Out of My Head”
Dye print on fine art paper
36 x 36
\$1750





“Untitled #483”
18 x 18
Oil on wood panel
\$1500

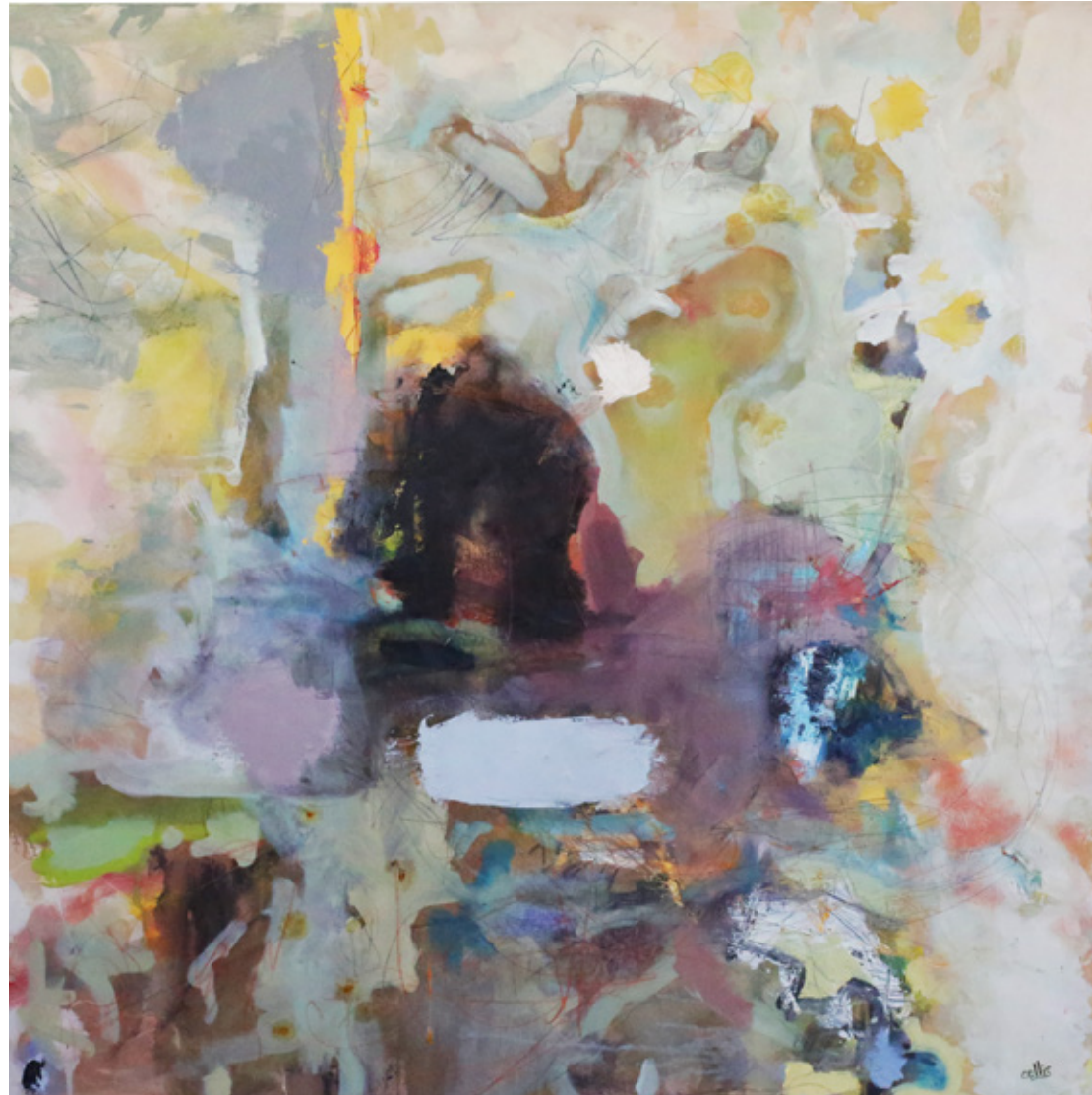
CHARLES ELLIS

Born in Lexington, Kentucky, Charles Ellis is a self-taught, abstract colorist who works mainly in oil on canvas and French paper. Painting without forethought, he works to keep ahead of the inner narrator to be fully present and connect with and express something deeper that is beautiful and aesthetic.

Charles's work is about the subconscious and beauty; about letting dreams come through and the viewer finding the reflections of their deepest thoughts. Feeding the mind, traveling since the age of twenty, Charles has been to museums + art galleries in Italy, Spain, Portugal, Germany, Switzerland, Belgium, England, Ireland, Scotland and Cuba; along with New York, Chicago, San Francisco, Los Angeles, Houston, Cincinnati and Louisville. After spending 5 years in England and 7 months in Cuba, Charles returned to Kentucky to drink in the colors and create from a palette rich in history and culture.

“I am an artist - abstract, oil painter, mixed media, digital photographer, and colorist. I like to experiment and discover through Art.” .

CONTACT FOR COMMISSIONS

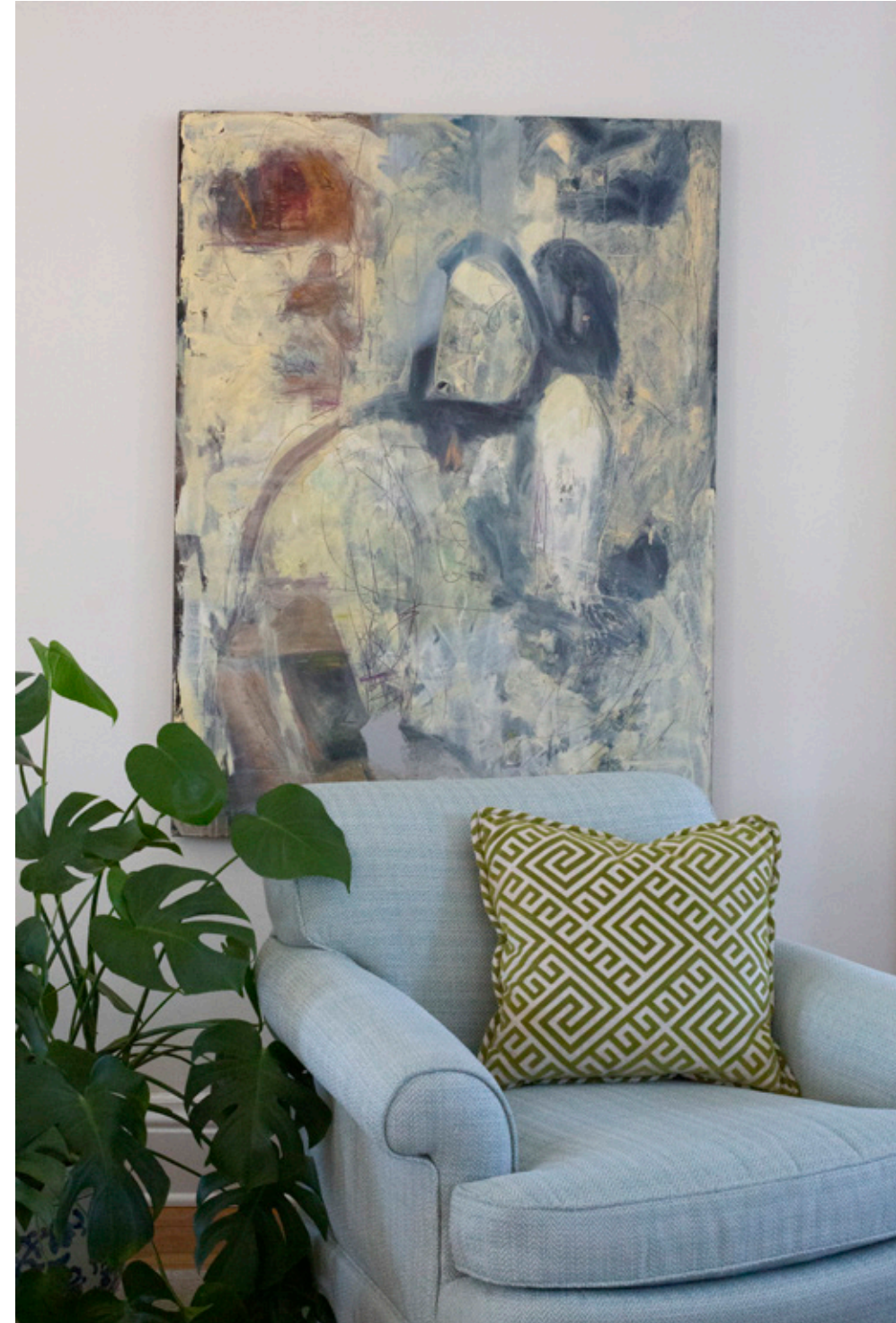


"Untitled"
Oil on canvas
40 x 40
\$3,000





“Untitled”
Oil on canvas
48 x 36
\$3,400





"Untitled"
Oil on canvas
30 x 40
\$2,100

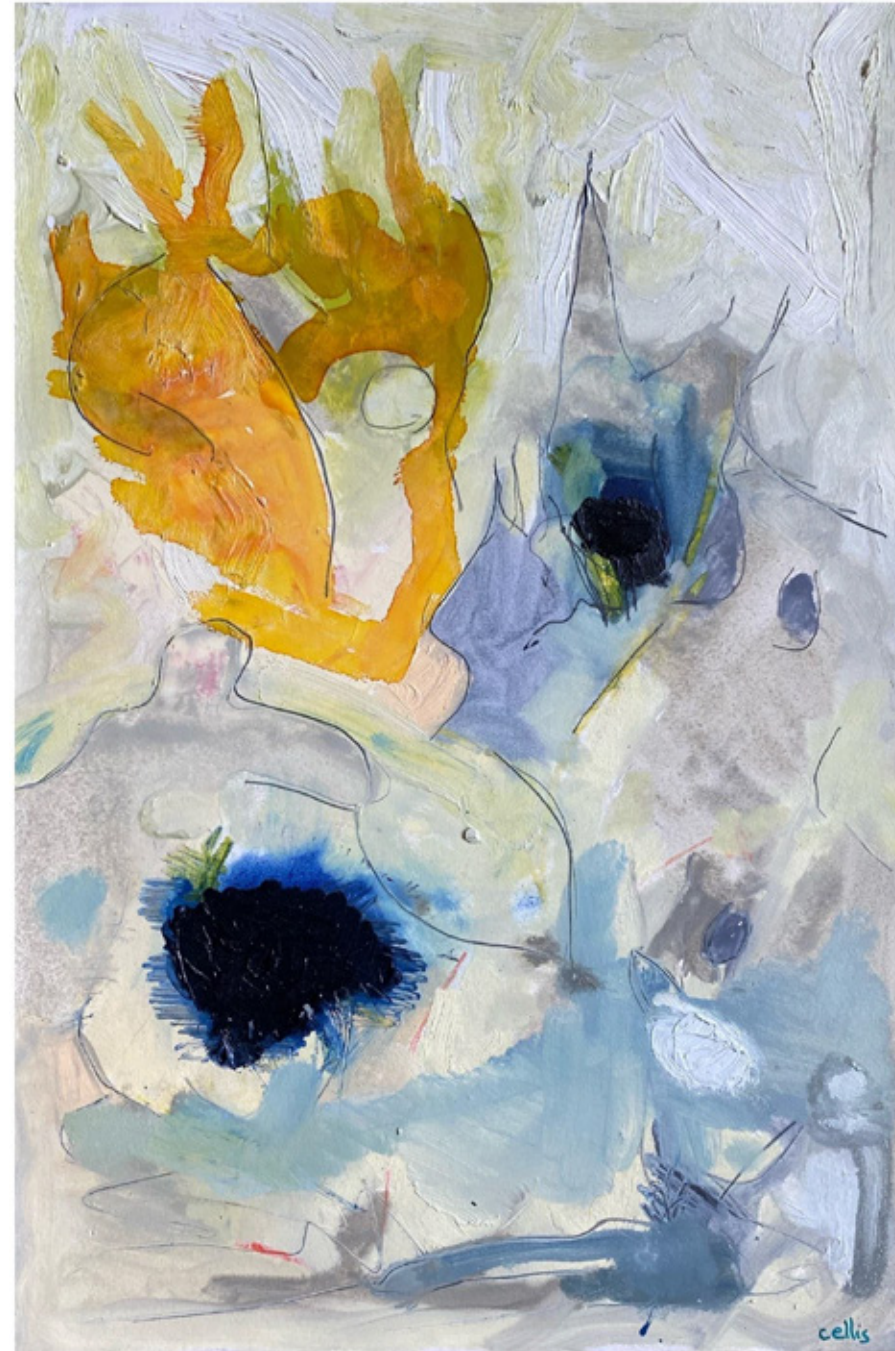




"Untitled"
Alcohol ink and oil on wood
16 x 16
\$850



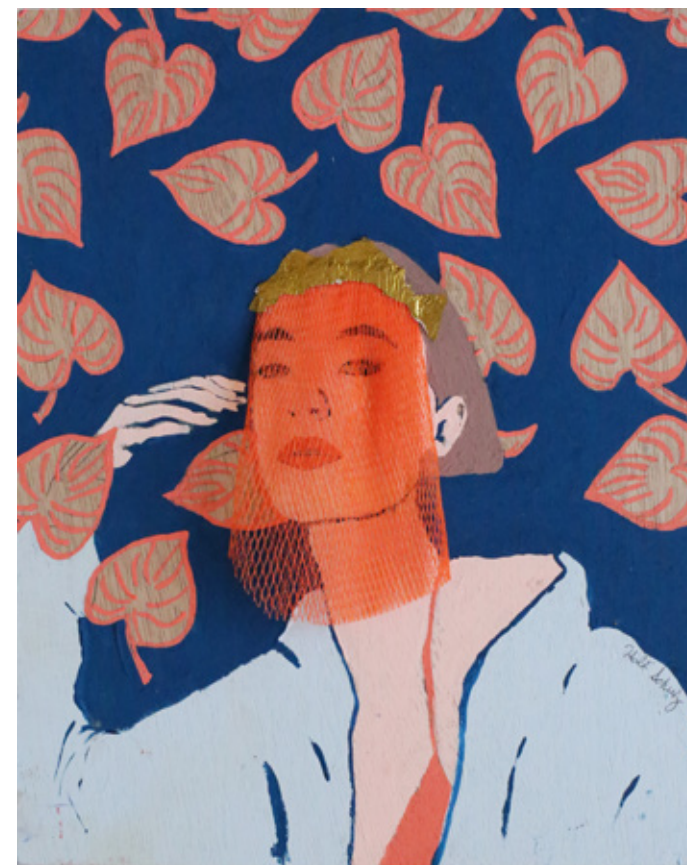
"Untitled"
Oil on wood
24 x 24
\$950



“Untitled #XXXIV”
Oil on French paper
22.5 x 15
\$950



“The Flock”
Gouache on panel
10 x 8
\$150



“Veiled/Netted”
Gouache on panel
10 x 8
\$150

HOLLI FRILEY

Holli Friley is a painter, printmaker, and illustrator living and working in Lexington, Kentucky. She graduated from Transylvania University in 2011 with a BA in Studio Art, focusing on printmaking. Since then, she has sold her work internationally and exhibited her work in galleries throughout Kentucky.

Serene figures prevail within minimal and mystical landscapes in my latest work. I hold a reverence for human resilience in our present time, which can often feel unstable, uncertain, and far too fast. Our environment is fragile, our bodies are fragile, yet there is something within us made of promise and conviction. We have the miraculous ability to own our fragility, live through uncertainty, and to remain hopeful through heights of doubt and fear. My graceful, female figures lend a portrait of hope and resilience even though they are surrounded by an uncertain and indiscernible landscape.

I begin my creative process with a monoprint, a quick, loose technique that results in forming an ethereal setting. I then create the figures, flora, and scenery that unfold when working with the results from the monoprint. I enjoy the tight patterns and realistic portraits within a loose, colorful field. This method uplifts my themes of resilience and fragility through a balance between intentional and unintentional. I hope my work can offer a blessing of peace, balance, and assurance to anyone feeling that void, standing in uncertainty.

CONTACT FOR COMMISSIONS



“Young Masters”
Gouache on wood
24 x 24
\$350



"Floral with Butterfly"
Gouache on paper
15 x 12
\$70



"Floral with Oxypetalum"
Gouache on paper
15 x 12
\$70



“Duke of Melbourne I”
Oil on linen panel
10 x 8
\$465

GARRETT HARDEE O’NEAL

After graduating from University of Texas at Austin in Plan II Honors, O’Neal attended Yale School of Architecture, where she obtained her master’s degree in architecture. She returned to the south and joined McAlpine House. Working for an architecture firm that values the poetry and heritage of a place has allowed her to design using the same principles her parents taught her.

Finding a way to expose an increasingly urban world to the importance of the agriculture industry is important to O’Neal. She hopes these pieces encourage reflection on a part of our collective history and the people who still honor those traditions.

CONTACT FOR COMMISSIONS



"Duke of Melbourne II"
Oil on linen panel
8 x 10
\$465



"Walls Court"
Oil on linen panel
10 x 8
\$465



"Gaineswood I"
Watercolor on paper
10 x 7
\$395



"Gaineswood II"
Watercolor on paper
10 x 7
\$395



“Blackstone”
Watercolor on paper
10 x 7
\$395

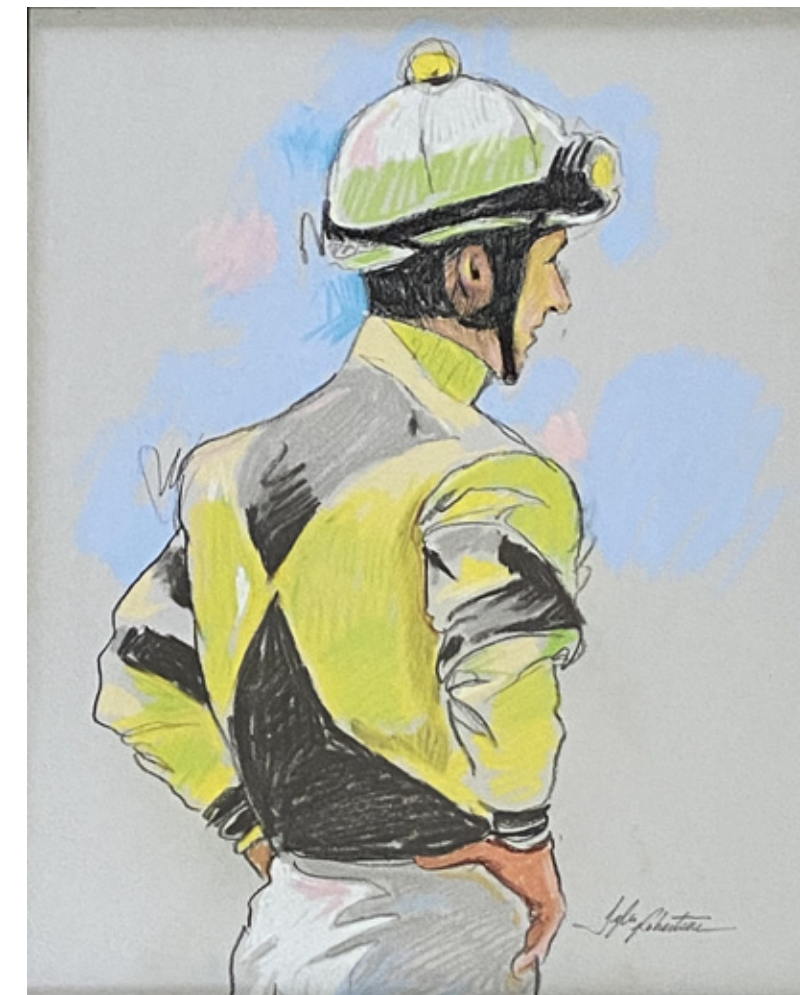


Untitled
Watercolor on paper
10 x 7
\$395





“Keeneland Jockey Study” (sold)
Pastel on paper
19 x 15
\$400



“Keeneland Jockey Study” (sold)
Pastel on paper
19 x 15
\$400

TYLER ROBERTSON

I have always been intrigued by sporting art. There is a certain feeling of power behind the genre. It is also a sprawling subject matter that lends itself really well to an artist. Here, I am focusing on thoroughbred racing. The colors and time old tradition of the sport is something that I am passionate about.

These paintings are done using acrylic and traditional house paint. I love working on a large scale and using big brushes. The smaller drawings are done with charcoal and pastel on toned paper. My approach is to be a fresh look at the world of horse racing. The contemporary framing, use of gallery wrapped canvas and even plywood is done to enforce the idea that this is something new.

CONTACT FOR COMMISSIONS



"Fly Fishing Study" (framed)
Pastel on paper
16 x 25
\$730



“Changing Leads”
Acrylic, oil stick, and enamel on canvas
60 x 48
\$9,000

DERBY PAGE 44 Saturday, May 1, 2021 DAILY RACING FORM DERBY PAGE 44

9 Alexander Valley
 B. c. 3 (Jan) KRSEPR12,16,000 Life 4 M 2 1 \$24,300 74 D.Fst 1 0 0 0 \$400 55
 Sire: Medaglia d'oro (K) Prad* (Fr) \$150,000
 Dam: Tina's Tangle (Unbrd) (S) \$50,000
 Tr: Matt Williams (1 0 0 0 0) 2021 (194 43 27)
 VELAZQUEZ J R (-) 2021: (195 33 17)
 Timeform US Pace: Early 83 Late 85
 18Apr21-5Kee gd 7th @ 484 1:54.1 2:39 Mid Sp W1 7th 73 7/11 5th 5th 7th 4th 3rd
 20Feb21-8GP fm 1 1/4 @ 24 481.1 1:14 1:41 Mid Sp W1 4th 74 2/10 5th 5th 3rd 2nd
 16Jan21-6GP fm 1 @ 23 474.1 1:32 1:37 Mid Sp W1 4th 74 10/10 7th 8th 6th 5th 2nd
 12Dec20-7GP fst 1 @ 23 467.1 1:34 1:37 Mid Sp W1 4th 55 6/8 6th 6th 5th 7th 6th
 WORKS: Apr 25 CD 3Fst 1:37 B 4th Apr 19 CD 4Fst 1:40 B 4th Mar 26 GP 4Fst 1:50 B 4th Mar 19 GP 4Fst 1:40 B 6th Mar 12 GP 4Fst 1:40 B 2nd
 TRAINER: TurfDirt (10 10 50 74) Dirt (28 20 11 55) Routes (195 18 51 75) MntSpW (252 16 11 55) J/T 2020-21 (14 54 81) J/T 2020-21 (16 17 51 20)

10 Centrifuge
 B. c. 4 (Mar) KRSEPR12,16,000 Life 2 M 1 0 \$7,065 72 D.Fst 2 0 1 0 \$7,065 72
 Sire: Tapit (Pol) \$1,000,000
 Dam: Sorana (C) \$1,000,000
 Tr: Scott Fiske (1 0 0 0 0)
 ORTIZ J L (-) 2021: (427 75 18)
 Timeform US Pace: Early 83 Late 85
 Previously trained by Brisnet Rodolphe 2020 (as of 12/16)
 15Dec20-27am fst 9th \$ 24 479.1 1:17 1:29 1:41 M
 11Nov20-9CD fst 6th 21 451 1:17 1:09 1:14 M
 WORKS: Apr 23 CD 5Fst 1:01 B 1st Apr 16 CD 5Fst 1:01 B 1st
 TRAINER: 1stWTrn (17 12 12 14 1) 1:18 1:18 J/T 2020-21 (17 54 20)

11 Rare Stripe
 B. c. 4 (Mar) KRSEPR12,16,000 Life 2 M 1 0 \$4,200 90 D.Fst 2 0 0 0 \$4,200 90
 Sire: Tapit (Pol) \$1,000,000
 Dam: Sorana (C) \$1,000,000
 Tr: Scott Fiske (1 0 0 0 0)
 CARMUCHE K (2-9-9) 2021: (307 25 11)
 Timeform US Pace: Early 88 Late 77
 18Apr21-5Kee 5th 1 \$ 23 474.1 1:32 1:37 Mid Sp W1 7th 59 5/8 5th 5th 4th 3rd
 17Mar21-5TP fst 6th 20 467.1 1:34 1:37 Mid Sp W1 7th 59 5/8 5th 5th 4th 3rd
 20Jan20-58el fst 7th 22 467.1 1:34 1:37 Mid Sp W1 7th 59 5/8 5th 5th 4th 3rd
 Previously trained by McGaughey Jr
 29Nov20-6GP fst 7th 22 467.1 1:34 1:37 Mid Sp W1 7th 59 5/8 5th 5th 4th 3rd
 WORKS: Apr 24 Kee 4Fst 1:40 B 4th
 TRAINER: 1stBink (16 12 11 54) J/T 2020-21 (16 17 51 20)

4 Chur
 KTDF
 Other Trn
 Three Year Old
 March 1 Allow
 Post time: 12:04 ET Wag
 Beyer par: 93

1 Invader
 B. c. 3 (Mar) KRSEPR12,16,000 Life 17 3 5 2 \$206,047 90 D.Fst 1 0 0 0 \$1,200 48
 Sire: English Channel (Smart Strike) \$27,500
 Dam: Bizzee Channel (Mizzen Mast) \$62,500
 Tr: Kivell Larry (-) 2021 (88 28 32)
 VELAZQUEZ J R (-) 2021: (195 33 17)
 Timeform US Pace: Early 88 Late 74
 18Apr21-5Kee gd 7th @ 471.1 1:31 1:43 4th Alw 2000h 87 11/11
 16Mar21-11TP fst 1 1/4 @ 24 471.1 1:31 1:43 4th Alw 2000h 87 11/11
 14Feb21-5TP fst 1 1/4 @ 24 481.1 1:32 1:43 4th Alw 2000h 87 11/11
 10Dec19-5TP fst 1 1/4 @ 24 481.1 1:32 1:43 4th Alw 2000h 87 11/11
 10Nov19-8CD gd 1 1/4 @ 24 501.1 1:32 1:43 4th Alw 2000h 87 11/11
 10Oct19-6Kee fm 1 @ 23 484.1 1:32 1:37 Mid Sp W1 7th 58 8/12 5th 6th 5th 5th 4th
 12Sep19-6Kee fm 1 @ 23 484.1 1:32 1:37 Mid Sp W1 7th 58 8/12 5th 6th 5th 5th 4th
 5Jul19-58el fst 6th 22 484.1 1:32 1:37 Mid Sp W1 7th 58 8/12 5th 6th 5th 5th 4th
 WORKS: Apr 24 Kee 5Fst 1:40 B 4th Mar 30 Kee 5Fst 1:45 B 3rd Mar 22 Kee 5Fst 1:50 B 3rd Mar 16 TP 5Fst 1:50 B 3rd Mar 9 TP 5Fst 1:50 B 3rd
 TRAINER: 20COver10 (16 27 11 63) Turf (20 22 11 57) Routes (195 18 51 63) Alw (119 26 11 78) J/T 2020-21 (13 24 51 14)

2 Bizzee Channel
 B. c. 3 (Mar) KRSEPR12,16,000 Life 17 3 5 2 \$206,047 90 D.Fst 1 0 0 0 \$1,200 48
 Sire: English Channel (Smart Strike) \$27,500
 Dam: Bizzee Channel (Mizzen Mast) \$62,500
 Tr: Kivell Larry (-) 2021 (88 28 32)
 GEROUX F (4-0-1-0-0) 2021: (265 66 25)
 Timeform US Pace: Early 88 Late 74
 27Feb21-8GP fm 1 1/4 @ 23 481.1 1:31 1:40 4th CanTuf-G 89 1/8 11 11 11 2nd 8th
 1Jan21-4TP fst 1 1/4 @ 24 481.1 1:31 1:40 4th CanTuf-G 89 1/8 11 11 11 2nd 8th
 30Dec20-7TP fst 1 1/4 @ 24 481.1 1:31 1:40 4th CanTuf-G 89 1/8 11 11 11 2nd 8th
 17Dec20-8Kee fm 7th @ 471.1 1:31 1:40 4th Alw 7000h 89 1/8 11 11 11 2nd 8th
 24Nov20-2GP fm 1 1/4 @ 23 501.1 1:32 1:44 3rd CanTuf-G 89 1/8 11 11 11 2nd 8th
 9Nov20-8CD fm 1 @ 23 481.1 1:32 1:37 3rd CanTuf-G 89 1/8 11 11 11 2nd 8th
 5Aug20-6GP fm 1 @ 23 471.1 1:31 1:36 3rd CanTuf-G 89 1/8 11 11 11 2nd 8th
 30Jul20-3Kee fst 6th 22 45 584 1:01 1:14 3rd CanTuf-G 89 1/8 11 11 11 2nd 8th
 5Oct19-4TP fst 6th 22 45 584 1:01 1:14 3rd CanTuf-G 89 1/8 11 11 11 2nd 8th
 WORKS: Apr 22 AP 4Fst 1:50 B 1st Mar 21 New 4Fst 1:10 B 1st Feb 16 GP 4Fst 1:50 B 1st Feb 1 GP 4Fst 1:50 B 1st
 TRAINER: 61-180Days (14 20 58 83) Turf (22 28 11 63) Routes (118 23 11 77) Claim (100 23 11 63) Alw (14 31 11 63) J/T 2020-21 (16 17 51 20)

Continued on following page

"Jockey Cap"
 Pastel on racing form
 10 x 8
 \$250

NE 2020-21 CD 12 .00 \$0.00 J/T 2020-21 (15 20 \$3.32)

1 MILE

Beyer par: 93

87 11/11 11 11 11 2nd 8th
 89 10/11 11 11 11 2nd 8th
 81 6/8 3 1/2 3 1/2
 69 10/12 3 1/2 3 1/2 13 1/2
 59 11/12 11 11 1st 2nd 54
 58 8/12 5 1/2 6 1/2 6 7 5 10
 60 3/9 5 6 5 1/2 6 1/2 3 1/2 3 1/2
 52 10/10 7 5 5 1/2 6 1/2 6 1/2

Ins, btw upr, bestd 1/16
 Invader? Fncy Liquor 5 1/2 Grudgingly gave in
 High Holy Tom Today Perfect trip, much best
 Invdr 1 1/2 Blood Rnd Ctholc Glt 1 1/2 Easily tons the best
 Blssht Kittn 5 1/2 Sml Tik 1 1/2 Ghostlor 5 1/2 Inside 1/4, faltered
 Chp 3 1/2 Dk of Crthn 1 1/2 Blckbrry Wn 2 1/2 4path 1/4, improved
 Alfi Solomons 1 1/2 Most Sndisfactory 1 1/2 Invdr 1 1/2 Bid 5w, hung
 Mntk Dddy 1 1/2 Tmfr Trbl 2 1/2 Db Bbb 1 1/2 4w upper, weakened

3/26/27 Mar 22 Kee 5Fst :59 1/2 B 3/14 Mar 16 TP 5Fst :58 3/16 Mar 9 TP 5Fst 1:00 4 B 3/14
 0.19 (1.65) Alw (115.26 \$1.78)

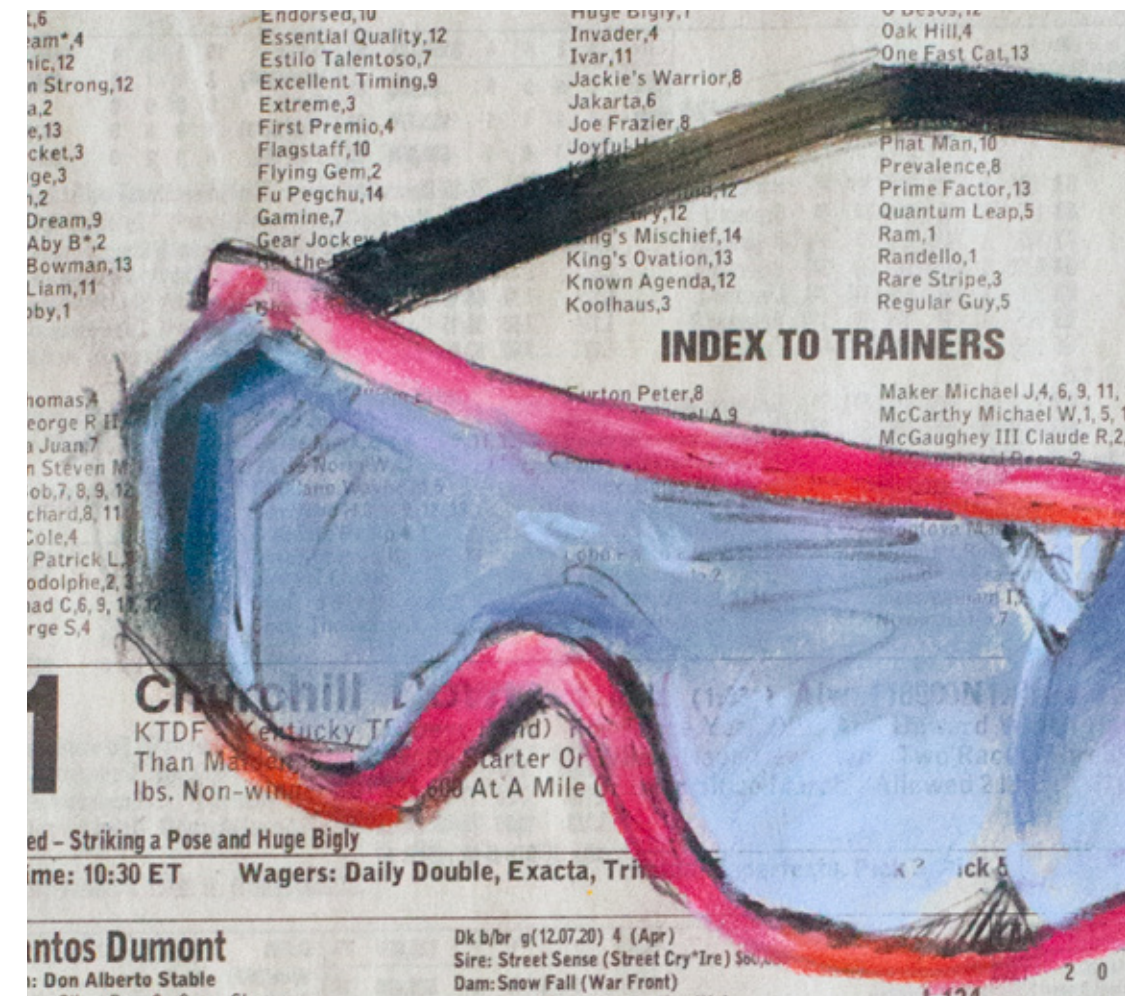
Jay Roberts J/T 2020-21 (13 24 \$1.14)

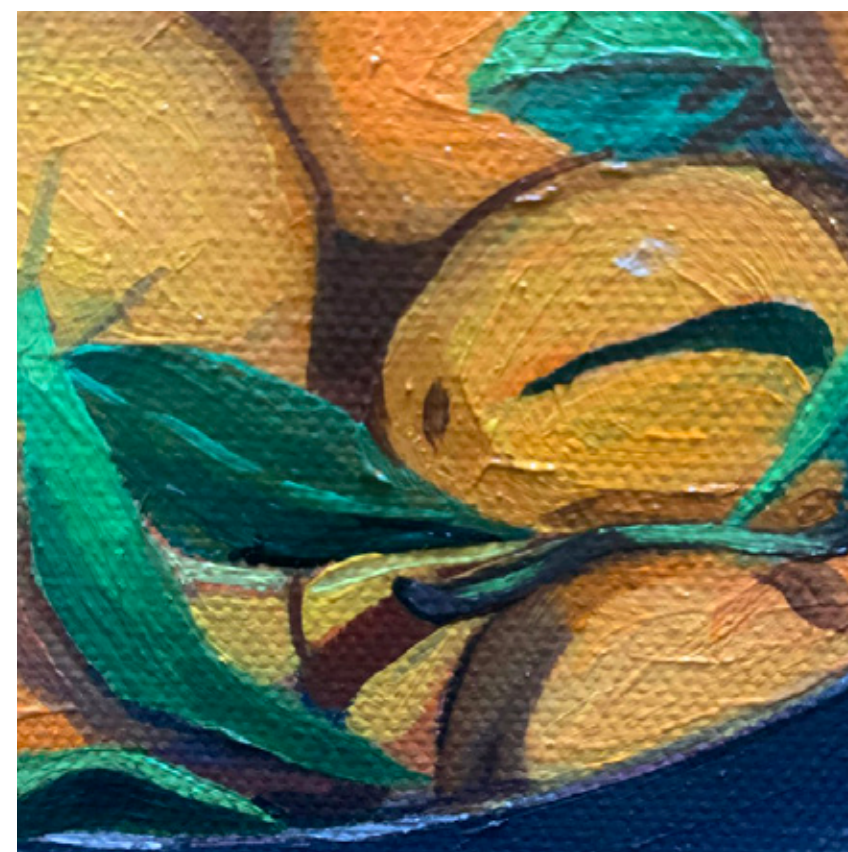
g(06.14.18) 5 (Mar) Life 17 3 5 2 \$206,047 90 D.Fst 1 0 0 0 \$1,200 48
 English Channel (Smart Strike) \$27,500 Wet(295) 0 0 0 0 \$0 -
 Bizzee Channel (Mizzen Mast) Synth 5 1 2 0 \$34,616 90
 Kivell Larry (-) 2021 (88 28 32) Turf(337) 11 2 3 3 \$170,231 90
 Dst(346) 6 1 2 2 \$90,660 89

89 1/9 11 1 1/2 1 1/2 2nd 8 1/2 Zayas E J 118 b 25.80 88-11 Vnzuln Hug 1 1/2 Olymrc Runnr 1 1/2 Gr Jacky 1 Rail, pace, tired
 73 1/11 11 1 1/2 1 1/2 2 1/2 6 1/2 Parker DL L120 b 3.50 89-13 Cullum Road 1 1/2 Royal Mes 1 1/2 Lnier 2 Rail speed, weakened,
 90 4/12 1 1/2 1 1/2 1 1/2 1 1/2 2nd Parker DL L123 b 7.70 90-19 St Pch 1 1/2 Bzz Chnn 1 1/2 Cullum Road 1 1/2 Stayed game, missed
 90 5/11 1 1/2 2 1/2 3 1/2 4 1/2 5 1/2 Corrales G L123 b 7.80 97-07 Sugo 1 1/2 Temple 1 1/2 Bizzee Channel 1 1/2 Stik ins, lack split upr
 88 8/8 1 1/2 1 1/2 1 1/2 2nd 1st Loveberry J L121 b *1.20 88-12 B Chnn 1 1/2 Cmmck 2 1/2 Impr Msn 2 1/2 Headed 1/8, came back
 89 2/9 1 1/2 1 1/2 1 1/2 1 1/2 2 1/2 Geroux F L122 b 5.10 109 - Big Apend 1 1/2 Bizzee Chnn 1 1/2 Gun 1 1/2 Long drv btw, gave in



"Goggles"
Pastel on racing form
10 x 8
\$250





“Oranges of Sherman Oaks”

Oil on canvas

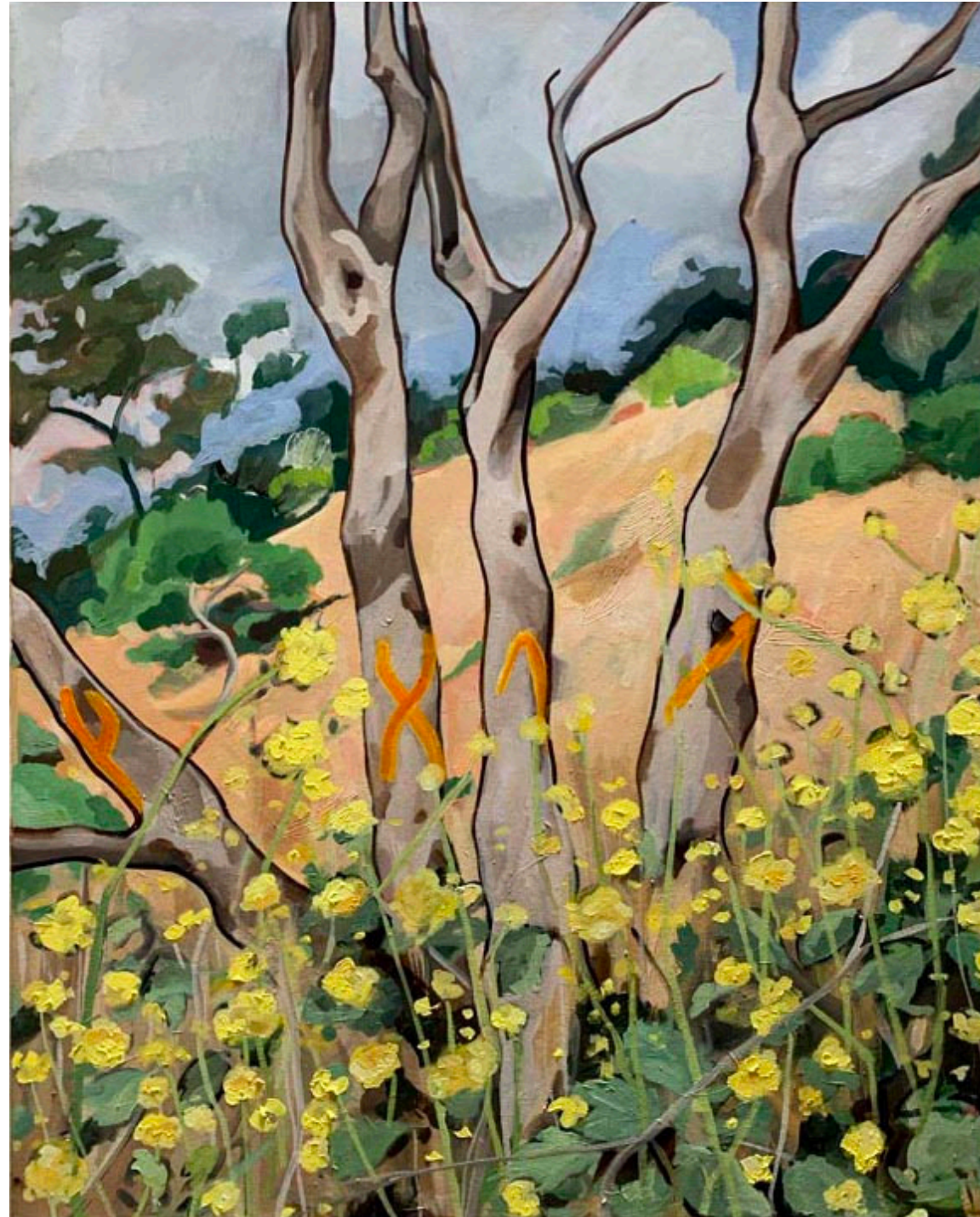
11 x 14

\$800

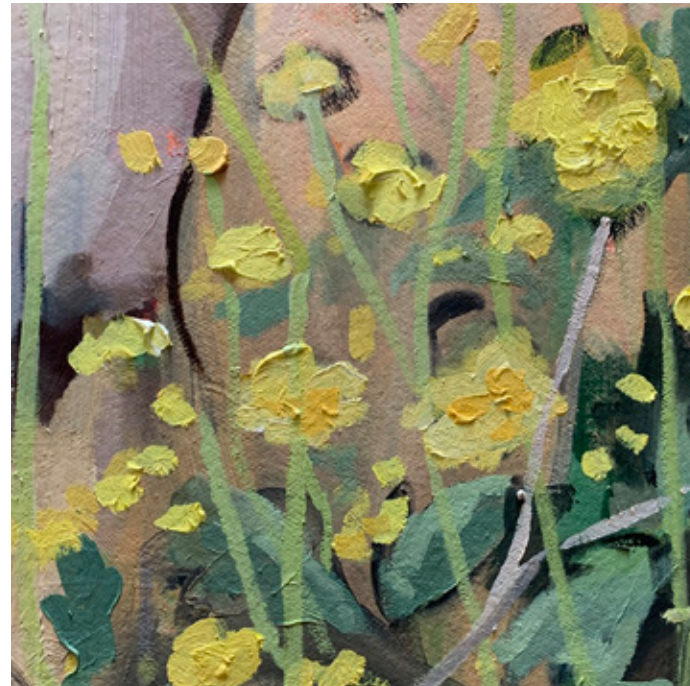
MARY GRACE TATE

Mary Grace Tate is an interdisciplinary artist, originally from Lexington, KY currently residing in Hoboken, NJ. She recently completed her MFA at Sierra Nevada University and holds a BA in Studio Art from Vassar College. Tate's work delves into the unintentional residue of our lived experience. The language on plastic bags, neon signs, and scrawls left on tree trunks are framed as earnest attempts for connection between the maker and the viewer. Her resulting canvases offer a humorous and sincere lens with which to view the world.

CONTACT FOR COMMISSIONS



"Elysian Park Marks"
Oil on canvas
30 x 24
\$1200





"Anchovies on Matzoh"
Oil on board
12 x 9
\$650



"Dandy"
Oil on board
10 x 8
\$800



"Aunt Foofy in 1964"
Oil on canvas
20 x 20
\$500



"Matriarchs"
Oil on canvas
24 x 24
\$600

ROSS THOMAS

Ross Peel Thomas, a native to Lexington, Kentucky, has always loved drawing. From a young age, he attended art centered schools and continued his studies at the Art Academy of Cincinnati, where he discovered a deep fascination with oil painting. His work has received numerous awards both in Arizona and Kentucky.

Ross' current work begins with an old photograph, usually of someone in his family, thus creating a personal connection with the image. That photo image is then reinterpreted in paint, with a major focus on painterly expression. The figures remain in black and white or some form of monochrome as they are in the photographs. The figures always look back at the viewer, hovering in the space between imagination and memory. His work has been called "nostalgic surrealism."

Ross can find inspiration anywhere. He thinks of himself as an alchemist and experimenter of paint and thinners more than an artist. The act of image making is the one constant to be seen in his life, as change and challenge bring inspiration to him. Anyone can see he is an artist to the core.

"I want my work to feel like a window into another world." -RT

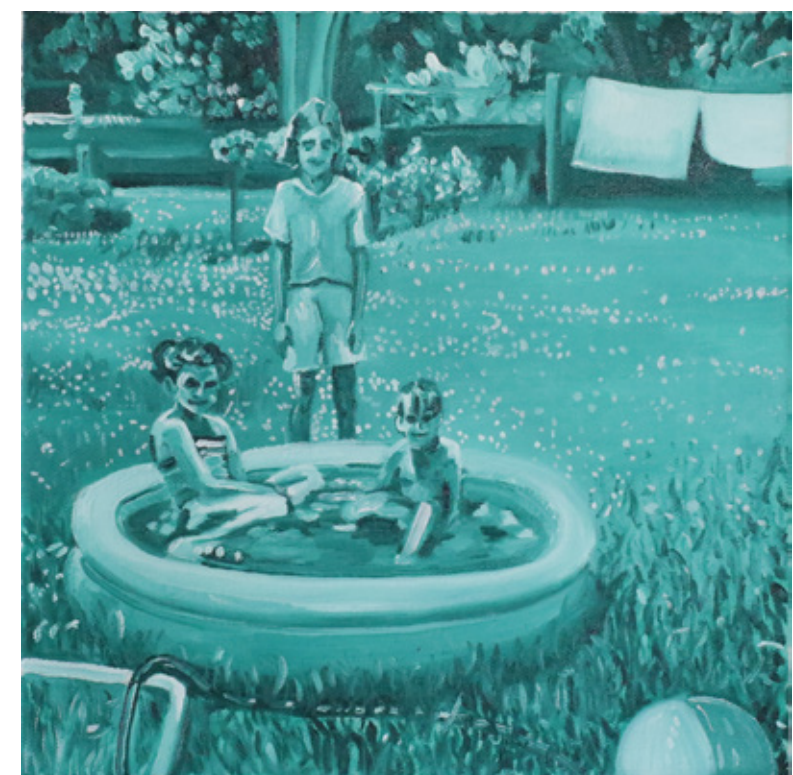
CONTACT FOR COMMISSIONS



“OG Jones Pool #1”
Oil on canvas
20 x 20
\$300



“OG Jones Pool #2”
Oil on canvas
20 x 20
\$300



“OG Jones Pool #3” (sold)
Oil on canvas
20 x 20
\$300